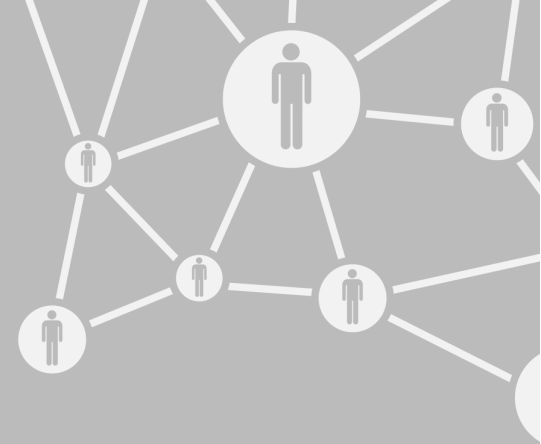


# Information Resources & Technology

April 2019 Newsletter



## Your First Line of Defense: A Strong, Unique Password

Using a strong, unique password for each of your online accounts is your first line of defense against fraud. If you use the same password for multiple accounts, a breach that affects one account puts all your other accounts where you used the same password in jeopardy.

We encourage you to use a password for your Rowan Network account that you don't use anywhere else. For tips on choosing a strong password, visit [go.rowan.edu/password](http://go.rowan.edu/password).

### Protect Your Account With Duo



Two-factor authentication adds an extra layer of security to your account. Enroll at [duo.rowan.edu](http://duo.rowan.edu).

To update your Rowan Network password, you must use [id.rowan.edu](http://id.rowan.edu). Any other methods that may have been previously used to change Rowan Network passwords will no longer work.

If you are not yet enrolled in Duo two-factor authentication, you will need to register for Duo before you are able to change your password. Duo provides an extra layer of security to your account.

To enroll in Duo, visit [duo.rowan.edu](http://duo.rowan.edu).

## Analyze Retention and Graduation Data

TAKE NOTE!



We recently launched the Census Retention and Graduation Dashboard, which provides faculty and staff with a more user-friendly experience for analyzing retention and graduation data for Rowan University students.

Based on institutional Census data, this updated dashboard presents retention and graduation data for cohorts from the term they first matriculated until the term they graduated. It also breaks down retention and graduation data by college, major, gender, ethnicity and various other categories.

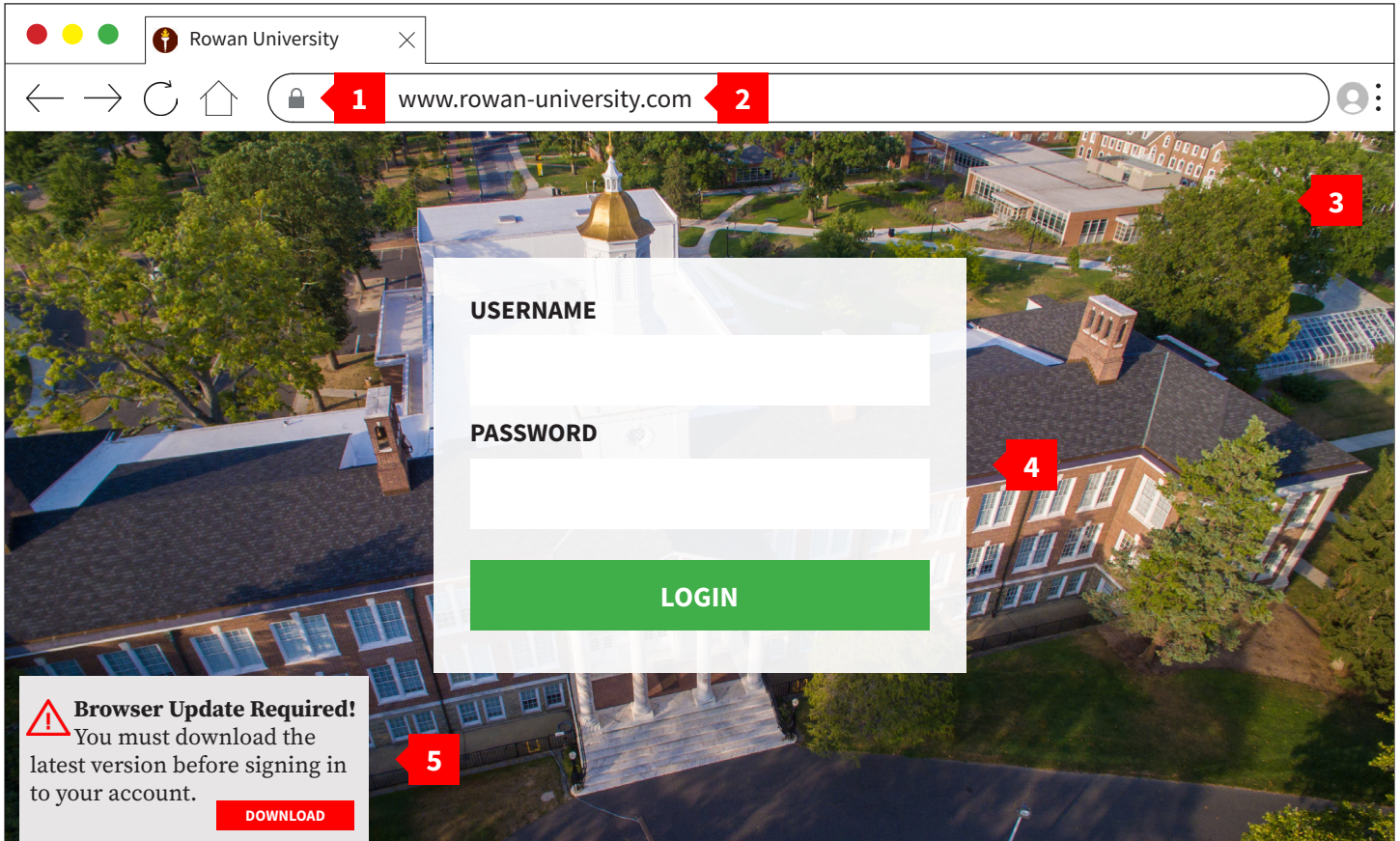
If you have a Tableau account, you may access the new dashboard by visiting [irt.rowan.edu/services/data.html#dashboards](http://irt.rowan.edu/services/data.html#dashboards) and clicking on "Census Retention and Graduation Dashboard" in the table.

If you would like to request a Tableau account to access this dashboard, please email [support@rowan.edu](mailto:support@rowan.edu).

With the recent launch of the Census Retention and Graduation Dashboard, the existing Retention and Graduation Dashboard has been retired.

# Learn How to Spot a Malicious Website

TIP OF THE MONTH



**1 Website Security**

**STOP & ASK YOURSELF:**  
How did I get to this website? Even if the website appears secure, did I click on a link in an email or file? Did I expect that link to direct me here?

**2 URL Address**

**STOP & ASK YOURSELF:**  
Have I visited this website before? Is the URL similar to a website I know but includes an extra word, misspelling, or other unusual characters?

**3 Site Content**

**STOP & ASK YOURSELF:**  
Does the website contain the navigation menus I would normally see? Is there a way to contact the owner of the website or get help?

**4 Log In Prompt**

**STOP & ASK YOURSELF:**  
Am I usually required to log in to access this website? If so, does this log in prompt look familiar, or is there something off about it?

**5 Download Request**

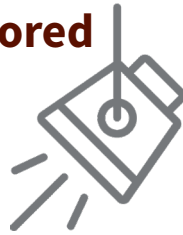
**STOP & ASK YOURSELF:**  
Have I ever been prompted to download a file on this type of website before? Do I normally need to take these steps to access this website?



**Do you have questions about a suspicious website? Contact IRT!**  
Support specialists are available to help you determine whether a website is legitimate or not. Call 856-256-4400 or email [support@rowan.edu](mailto:support@rowan.edu) for assistance.

# Access to Secure Areas With Critical IT Infrastructure Limited and Monitored

Data centers, server rooms, network closets and other places housing critical information technology are designated secure areas.



According to the [Physical Security for IT Network Resources policy](#), such areas should not be shared with or used with any function other than legitimate IT resources.

IRT POLICY  
SPOTLIGHT

The policy also states that the principle of least privilege, which limits access to the minimal level required for someone to perform their job responsibilities, must be followed when granting access to secure areas and facilities that contain secure areas.

Also, the policy states that physical access to secure areas must be monitored to detect and respond to physical security incidents.

To review the entire [Physical Security for IT Network Resources policy](#) and other IRT policies, visit [go.rowan.edu/irtpolicies](http://go.rowan.edu/irtpolicies).

## Security Threats



In March, we detected and blocked 88 virus attacks and 30,300 emails with malicious URLs sent to our network.

Universities are prime targets for cyberattacks due to the amount of personal data and sensitive research material stored on their networks.

Please immediately contact the Technology Support Center at 856-256-4400 or [support@rowan.edu](mailto:support@rowan.edu) if you think you have clicked on a malicious link or attachment in an email. Acting quickly will minimize the risk to the University.

### Request Support Help

Visit the IRT Support Portal to request help by double-clicking on the support icon below from a Rowan-managed computer, or go to [support.rowan.edu](http://support.rowan.edu).



You may also call or email us for help.

**Phone:** 856-256-4400

**Email:** [support@rowan.edu](mailto:support@rowan.edu)

### Check Our Status

Visit [go.rowan.edu/status](http://go.rowan.edu/status) for the latest technology news and information about upcoming maintenance, current outages and known phishing scams.

### Follow @RowanIRT



 **RowanUniversity**

INFORMATION RESOURCES & TECHNOLOGY

### On Security Awareness Training:

“Twice I actually deleted your prompt for completing this training, based on a similar training I took as an adjunct faculty at my local university. Their plan effectively involved a ‘trap’ where the training itself began with a ‘we got you’ sort of response for engaging with their link. Oddly in the end I (thought) I followed all of the right patterns of care and precaution, but still wound up slowing down your systems. Your training was effective and you folks are doing good work.”



COMMUNITY  
FEEDBACK

- M.M. in Jazz Studies student Steven Cady