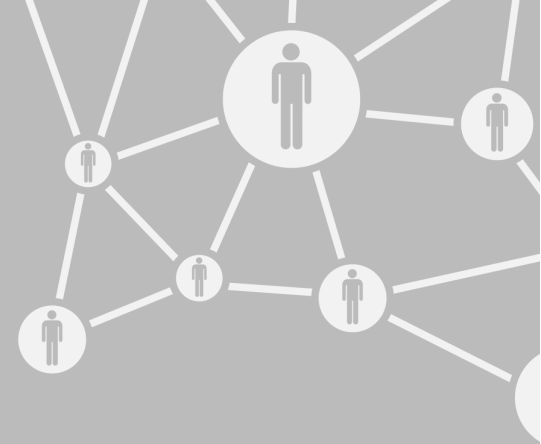


# Information Resources & Technology

June 2019 Newsletter



## Watch Out for Job Offer Email Scams

Rowan University students are being targeted by job offer email scams that could result in personal financial losses. Be on the lookout for these types of scams, which often promise good pay for part-time work.

There are many types of job offer scams but a common one instructs students to deposit checks into their personal checking accounts and then withdraw the funds to purchase gift cards or wire money to other accounts. The checks are later found to be fraudulent, leaving students on the hook for paying back the amount of the counterfeit checks.

### How to Spot a Phishing Scam



Get some quick tips for spotting emails that may be trying to trick you. Visit [go.rowan.edu/phishing](http://go.rowan.edu/phishing).

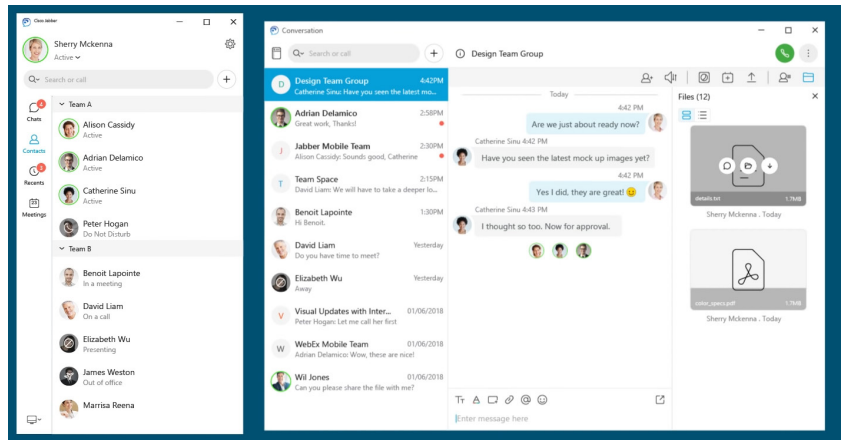
Never accept a job that requires depositing checks into your account and wiring portions to other individuals or accounts.

Whenever you receive an unsolicited job offer, be skeptical and do your research before responding.

You can always contact us at 856-256-4400 or [support@rowan.edu](mailto:support@rowan.edu) for help in deciding whether a job offer is real.

## Meet Cisco Jabber: A New Collaboration Tool

TAKE NOTE!



Effectively managing the dozens — or even hundreds — of emails you receive each day at work can be a daunting task. Cut down on inbox clutter with Cisco Jabber.

Cisco Jabber is a unified communications application that allows Rowan University employees and student workers to instantly message each other in one-on-one or group chats. You can also see whether a coworker is available, in a meeting or away, so you aren't waiting for a response from a colleague who is out of the office.

You can install and start using Cisco Jabber today by following these instructions:

- [Install Jabber on Windows](#)
- [Install Jabber on Mac](#)

Cisco Jabber also integrates with Webex, giving you the ability to instantly arrange a video conference, and allows for desktop sharing.

Visit [go.rowan.edu/jabber](http://go.rowan.edu/jabber) for more help getting started with Jabber and information on the [Appropriate Data Use](#) permitted in Jabber.

# Use Persistent Chat Rooms in Cisco Jabber



In addition to one-on-one instant messaging and group messaging, you can also create persistent chat rooms in Cisco Jabber. Persistent chat rooms offer ongoing access to group discussions and are always available.

TIP OF THE MONTH

With persistent chat rooms, Rowan University employees and student workers in different locations and campuses can easily collaborate with one another and quickly get up to speed with ongoing conversations.

You can [create a persistent chat room](#) on your own in Cisco Jabber by opening the Jabber Hub and clicking Rooms, All Rooms and New Room and then entering the requested information and adding chat members.

You can also request help creating a persistent chat room by logging in to [support.rowan.edu](http://support.rowan.edu) and submitting a request with the name of your department, name requested for the persistent chat room and whether you want the chat room to be public (open to all Jabber users) or private (restricted to certain Jabber users). If the persistent chat room is restricted please state the name(s) and network username(s) of who the moderator(s) should be. Moderators are responsible for maintaining group membership and adding other moderators.

For more help using Cisco Jabber and persistent chat rooms, visit [go.rowan.edu/jabber](http://go.rowan.edu/jabber).

## LinkedIn Learning

Arriving at Rowan University in summer 2019.

- ✓ New, easy-to-use interface
- ✓ Personalized course recommendations
- ✓ Option to connect your LinkedIn profile



LEARNING  
WITH Lynda.com<sup>®</sup> CONTENT

The online learning platform Lynda.com will be upgraded to LinkedIn Learning this summer. The update to LinkedIn Learning provides a new interface that'll make it easier for you to find relevant content. LinkedIn Learning also offers the option to connect your LinkedIn profile with your account to receive personalized course recommendations.

Visit [go.rowan.edu/linkedinlearning](http://go.rowan.edu/linkedinlearning) for more information.

# Acceptable Use Policy Restricts Use of Sensitive Data in Third-Party Services

Rowan University's [Acceptable Use Policy](#) sets restrictions on what types of University data may be shared on third-party technology services, including social media platforms, cloud services and video conferencing and chat tools, among others.



IRT POLICY  
SPOTLIGHT

According to the policy, non-approved chat services, such as Slack and HipChat, cannot be used to communicate University information classified as Confidential or Private or otherwise considered privileged or sensitive by Rowan.

Cisco Jabber is approved for Private, Internal and Public data. For more information about Cisco Jabber and Appropriate Data Use, visit [go.rowan.edu/jabber](http://go.rowan.edu/jabber).

To review the entire [Acceptable Use Policy](#) and other IRT policies, visit [go.rowan.edu/irtpolicies](http://go.rowan.edu/irtpolicies).

## Security Threats



Over the last 30 days, we detected and blocked 115 virus attacks and 33,000 emails with malicious URLs sent to our network.

Universities are prime targets for cyberattacks due to the amount of personal data and sensitive research material stored on their networks.

Please immediately contact the Technology Support Center at 856-256-4400 or [support@rowan.edu](mailto:support@rowan.edu) if you think you have clicked on a malicious link or attachment in an email. Acting quickly will minimize the risk to the University.

### Request Support Help

Visit the IRT Support Portal to request help by double-clicking on the support icon below from a Rowan-managed computer, or go to [support.rowan.edu](http://support.rowan.edu).



You may also call or email us for help.

**Phone:** 856-256-4400

**Email:** [support@rowan.edu](mailto:support@rowan.edu)

### Check Our Status

Visit [go.rowan.edu/status](http://go.rowan.edu/status) for the latest technology news and information about upcoming maintenance, current outages and known phishing scams.

Follow [@RowanIRT](https://twitter.com/RowanIRT)



RowanUniversity

INFORMATION RESOURCES & TECHNOLOGY

### Did You Know...?



Fun Facts

Rowan University provides wireless internet access through three networks for students, faculty, staff and guests.

During peak usage, more than **15,000** devices are simultaneously connected to the University's network.

Visit [go.rowan.edu/network](http://go.rowan.edu/network) to learn about connecting your device to the Rowan Network.